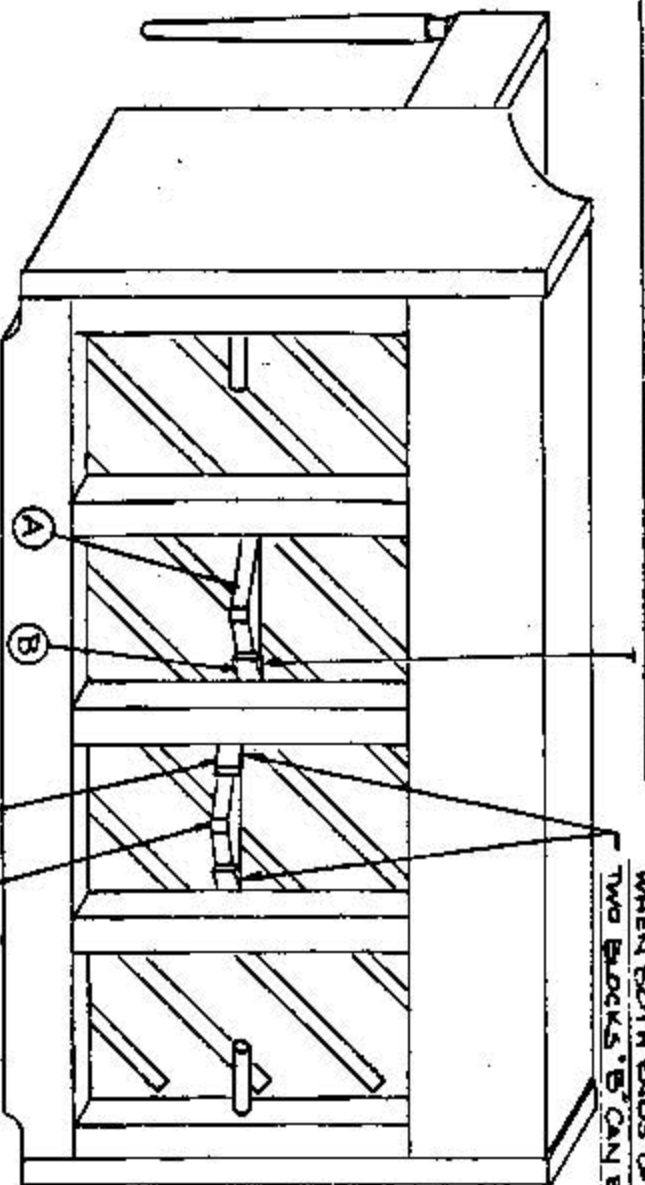
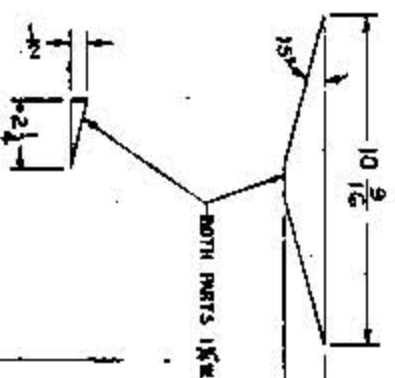


WITH ONE END OF BLOCK "A" LOCKED BEHIND BACK

POST WEDGE OTHER END BY DRIVING BLOCK "B" AT ANY ANGLE SO AS NOT TO INTERFERE WITH OTHER RIBS.



WHEN BOTH ENDS OF BLOCK "A" ARE FREE TWO BLOCKS "B" CAN BE USED, ONE AT EITHER END



PROCEDURE FOR GAINING LOOSE RIBS

1. FORCE GLUE UNDER PORTION OF RIB WHICH IS LOOSE WITH FEELER GAUGE.
2. WIPE OFF EXCESS GLUE WITH DAMP SPONGE OR CLOTH.
3. INSERT BLOCK "A" SO AS TO SEAL AREA BETWEEN TWO BACK POSTS.
4. DRIVE IN BLOCK "B" AS SHOWN UNTIL GLUE SQUEEZE OUT APPEARS.

RECORD OF CHANGE

PLANKING INSTRUCTIONS FOR RE-CURING
LOOSE RIBS

1-10-61
Acadsonic & Upright

THE PALOMAR PIANO CO.
CINCINNATI, OHIO
B 249-025608

MICRO FILMED BY TS